

NEW



SURVEY PRODUCTS

TOPCON



TopSURV FC-1000

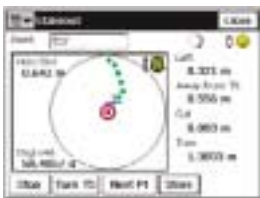
Topcon's Powerful New Field Controller
Software and Hardware

Topcon's new TopSURV Field Controller Software combined with our latest handheld Windows CE computer, the FC-1000, represents the most powerful combinations in the industry. Finally, a Single Source Solution to all of your field controller needs!

TopSURV Field Controller Software

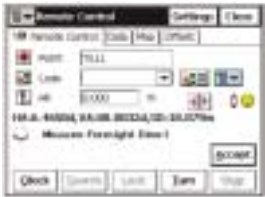
This new Windows CE software installs easily in just minutes onto the new Topcon FC-1000 field computer, or other popular Windows CE devices such as the At-Work Ranger, Compaq IPaq or the Panasonic Toughbook. Providing the user with an intuitive graphical user interface, TopSURV has set a new standard for field data collection, stakeout, and control work.

The menus and screens have been designed with the operator in mind. No hassles of hunting around for an option hidden deep inside some sub-menu. All of the important field operations and features are available at the press of a button or tap on the screen.



Graphical Stakeout

- Multiple reference choices visible to the operator.
- Graphical point path leads you to the desired point.
- Linear distances and graphical display all in one screen.
- Easy to stop and start staking, or move to the next point.



Automated Data Collection

- All raw data visible to the operator along with simple entry fields for Point ID, Descriptor Code, and Rod Ht.
- One-Touch access to Data, Map and Offset screens.
- Collect data in the real-time Map Screen as well as standard text screen.



Reference Line

- Clear indication of operator's location with respect to the reference line.
- Text and graphics all in one easy to view screen.
- Design elevation relationship also provided.
- Tracking status and battery indication always in view.

Other important field controller functions include Auto-Base and Auto-Rover operations for RTK GPS positioning, Auto-Topo functions for collection by time or distance, time stamp of all raw data, extensive offset collection, and much more.

TopSURV works with all Topcon electronic total stations and GPS systems, providing the customer with a powerful field controller to handle any project.

Contact your local Topcon distributor today for an on-site demonstration!



TOPCON POSITIONING SYSTEMS, INC.
925-460-1300 • 800-443-4567
Pleasanton, CA USA
www.topcon.com



FC-1000 Windows CE Field Computer

Topcon's new FC-1000 was designed and built by Topcon, not some third party manufacturer. We decided it was about time that a rugged field computer for surveyors, should be designed and built by the world leader in surveying instrumentation. We have been building instruments for surveyors for over 70 years. We know what you need in the field, and more importantly, we know what you demand!

The FC-1000 was built to withstand rugged use you require in the field. However, a shockproof and waterproof design is only the beginning. The keyboard is designed to be easy to use whether you are wearing gloves in the cold, or suffering through the summer heat. We even remembered to build in a hook on the back, to hang the FC-1000 on the tripod leg! The FC-1000 offers many key features not found in most other field computers. Here are the primary ones:



- Removable Compact Flash Card
- 2 comm Ports (9-pin serial, 6-pin instrument)
- USB Port
- Removable Li-Ion Batteries (off the shelf mini-cam batteries)
- Super-fast Hitachi SH-4 RISC Microprocessor running at 300 MIPS!

Quick Specs:

Dimensions	255x130x61.5(mm)
Weight	800g (including batteries)
Microprocessor	Hitachi SH7750S
Processor Speed	300 MIPS
Operating System	MS Windows CE v 3.0
Memory	32MB SDRAM with flash ROM 2MB 32MB flash disk (Internal)
Data Card	Removable Compact Flash
Bluetooth Capable	YES
Display	320x240 QVGA (monochrome) STN Reflective type Temperature compensation
Backlight	Frontlight (CCFL),
Keyboard	56 key keyboard with separate alpha and numeric
Serial	RS-232C serial (6pin) RS-232C serial (D-sub 9) USB
External Power	Yes
Audio	Sealed Speaker (mono) Sealed Microphone
Environmental	IP-66
Temperature	Operating: -20° C to +60° C
Integral Heater	Yes
Batteries	Removable Li-ION rechargeable system, supplied with 2 batteries.
Operation	6+ Hours Single battery

Specifications are subject to change without notice.